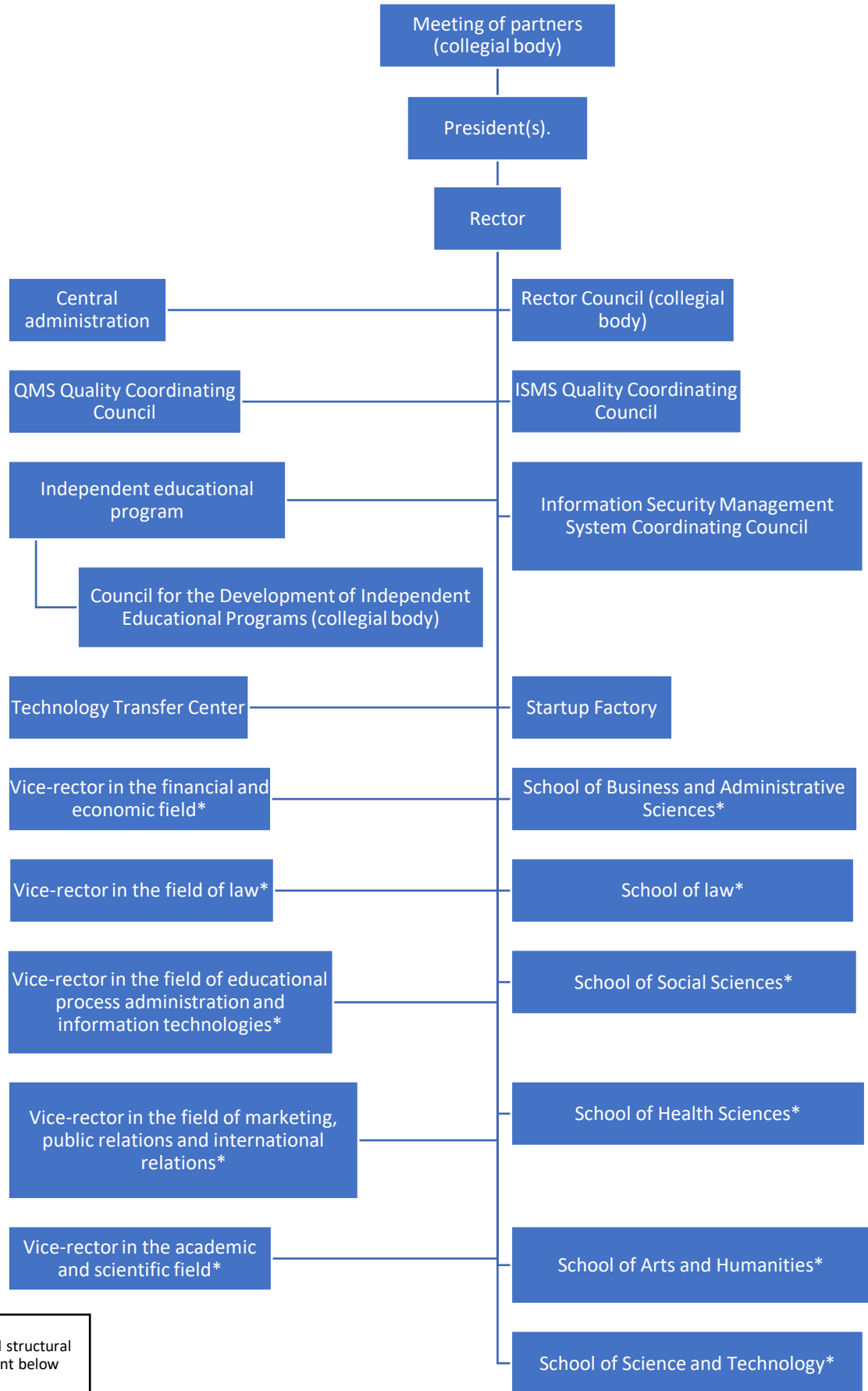
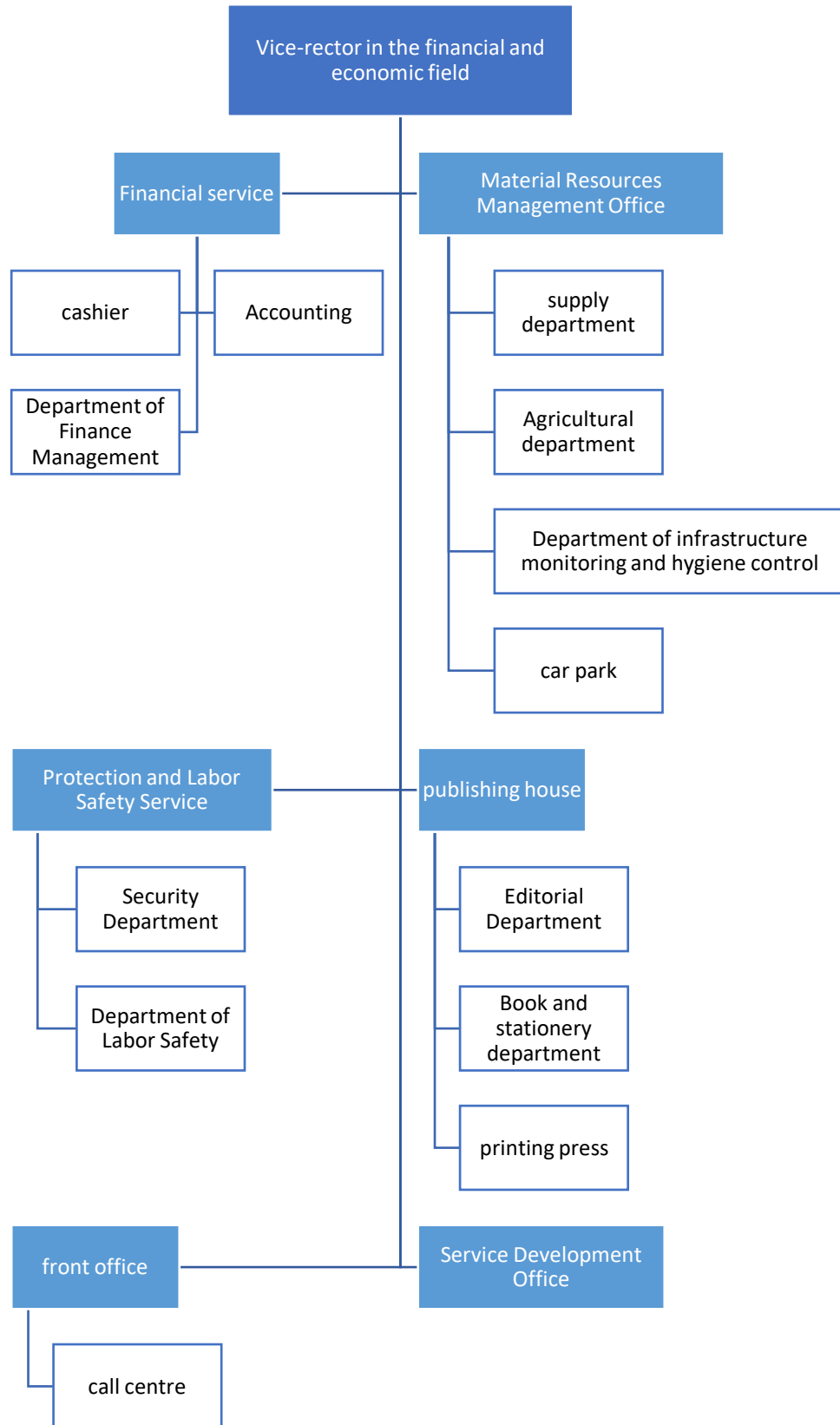


Structure of the University of Georgia

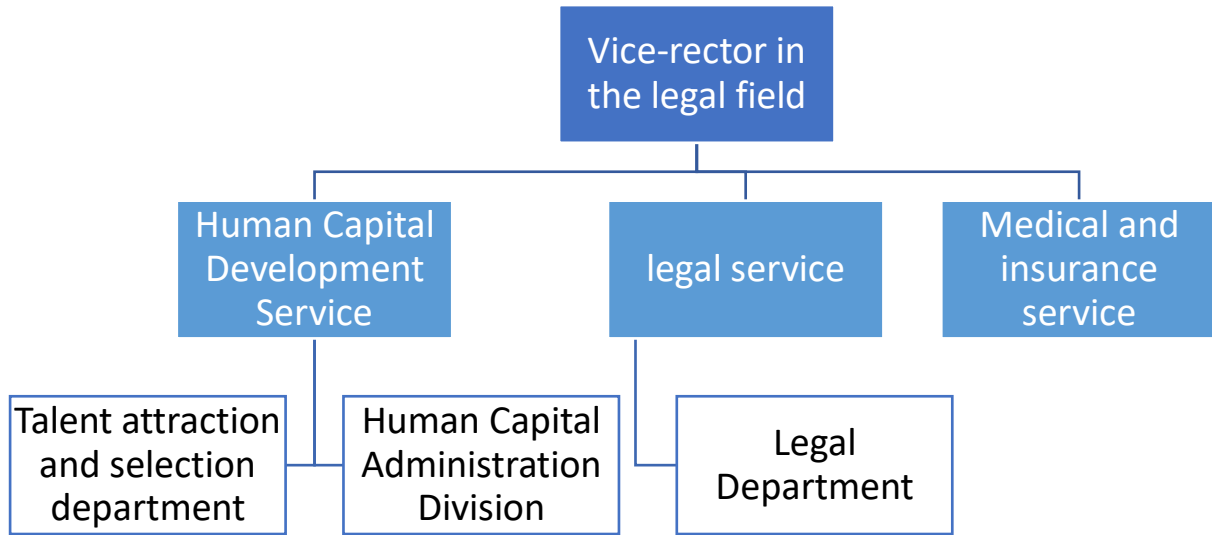


*see Internal structural arrangement below

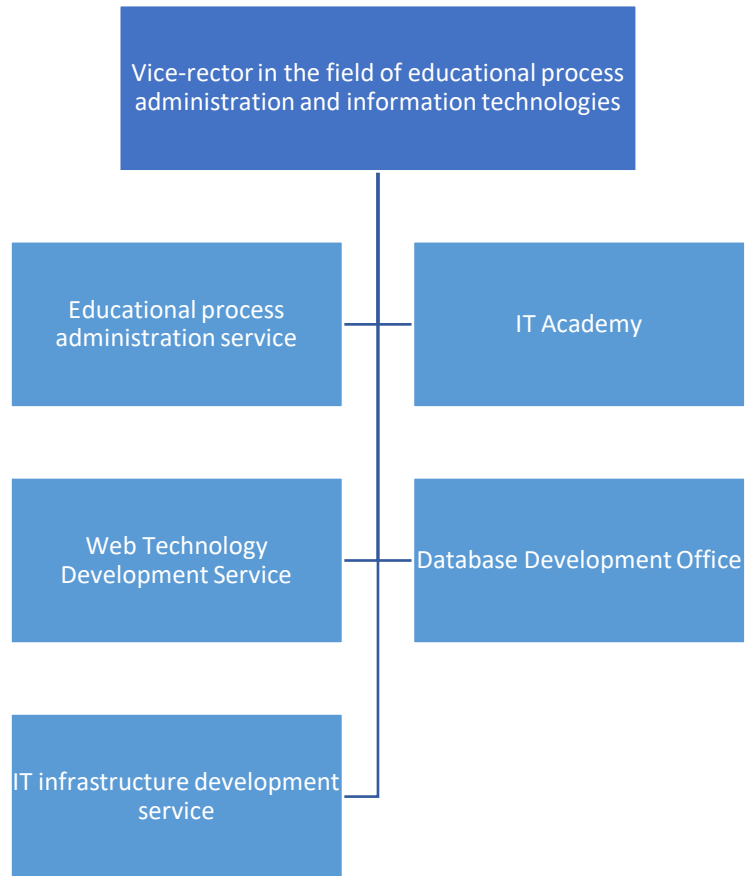
Structure of the University of Georgia

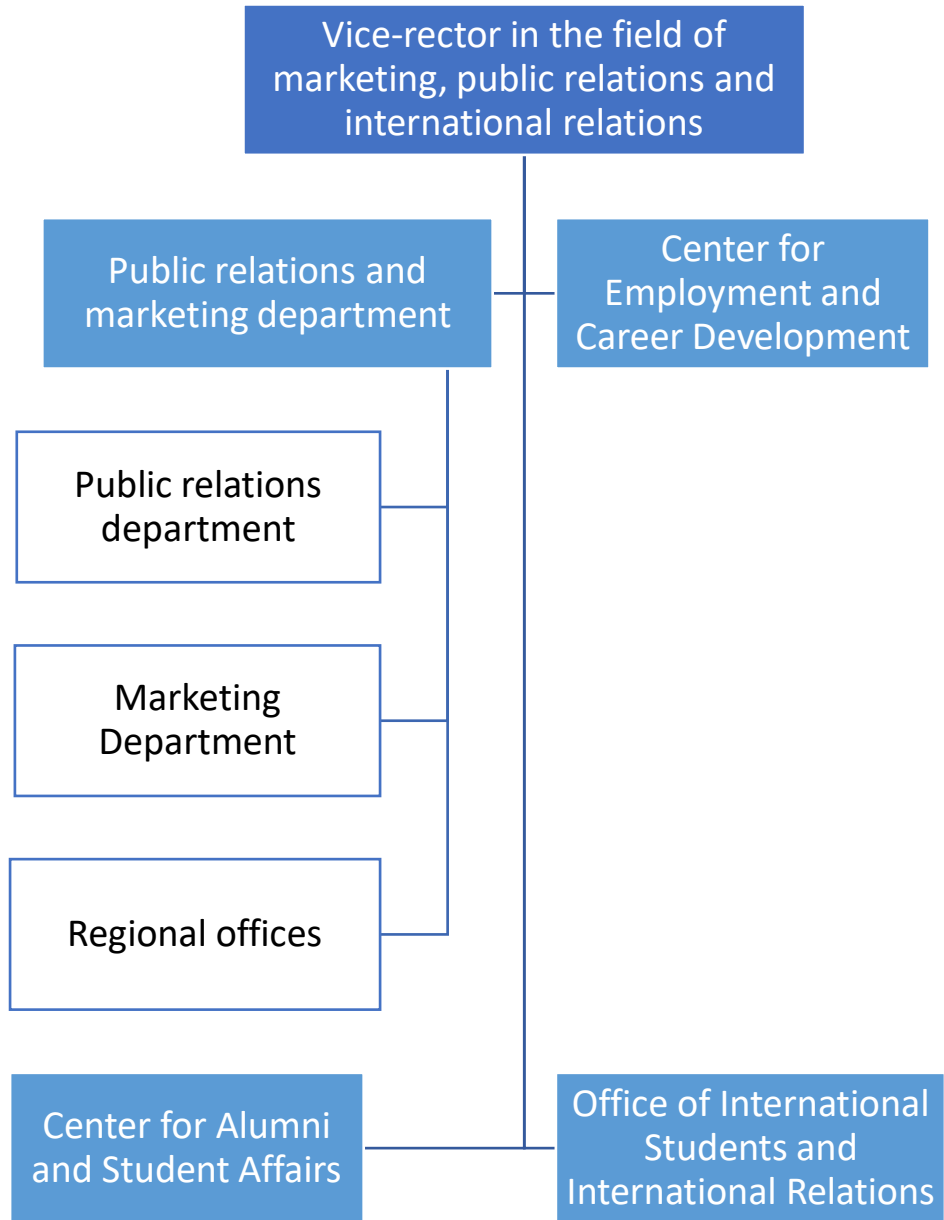


Structure of the University of Georgia

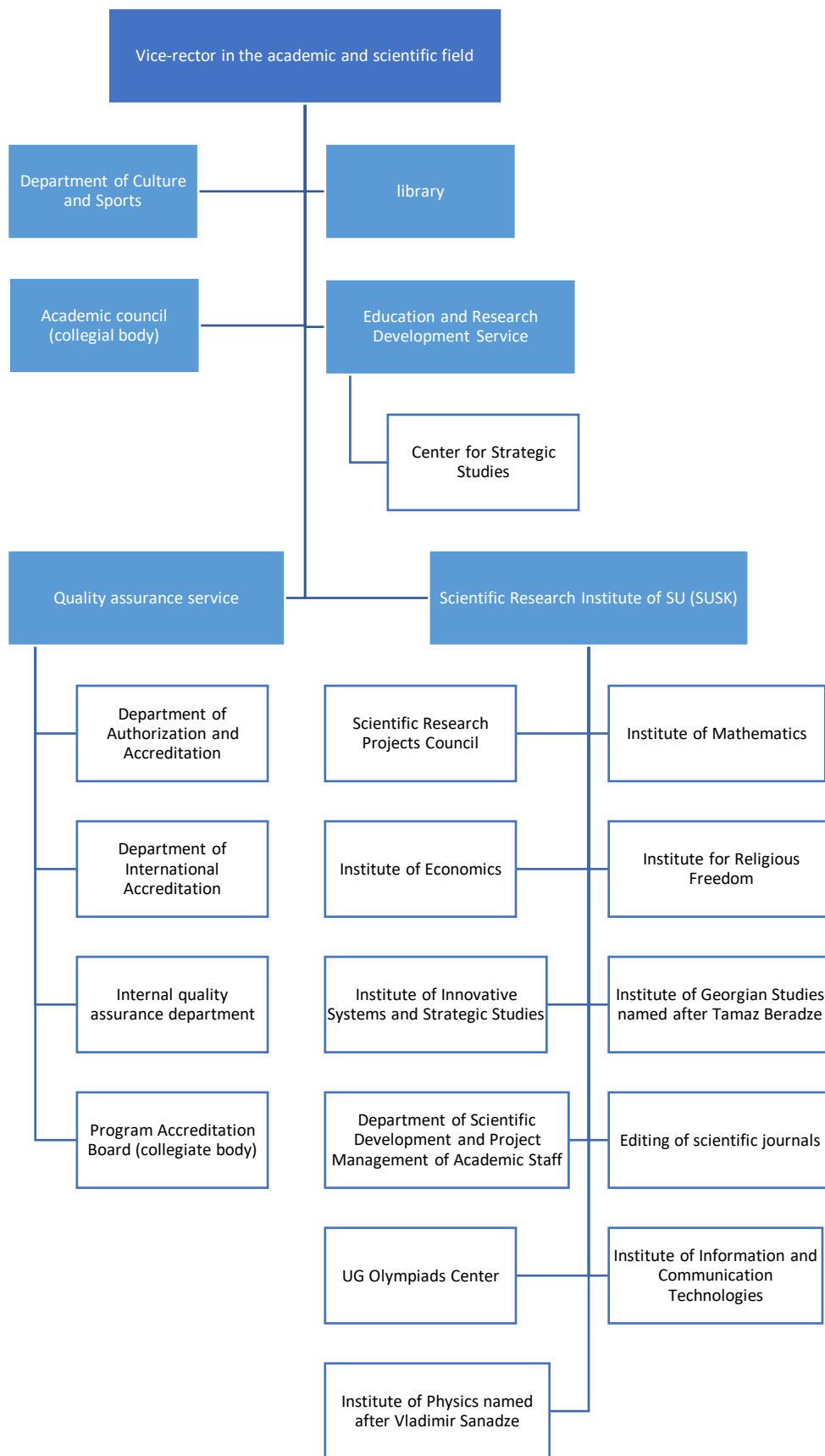


Structure of the University of Georgia

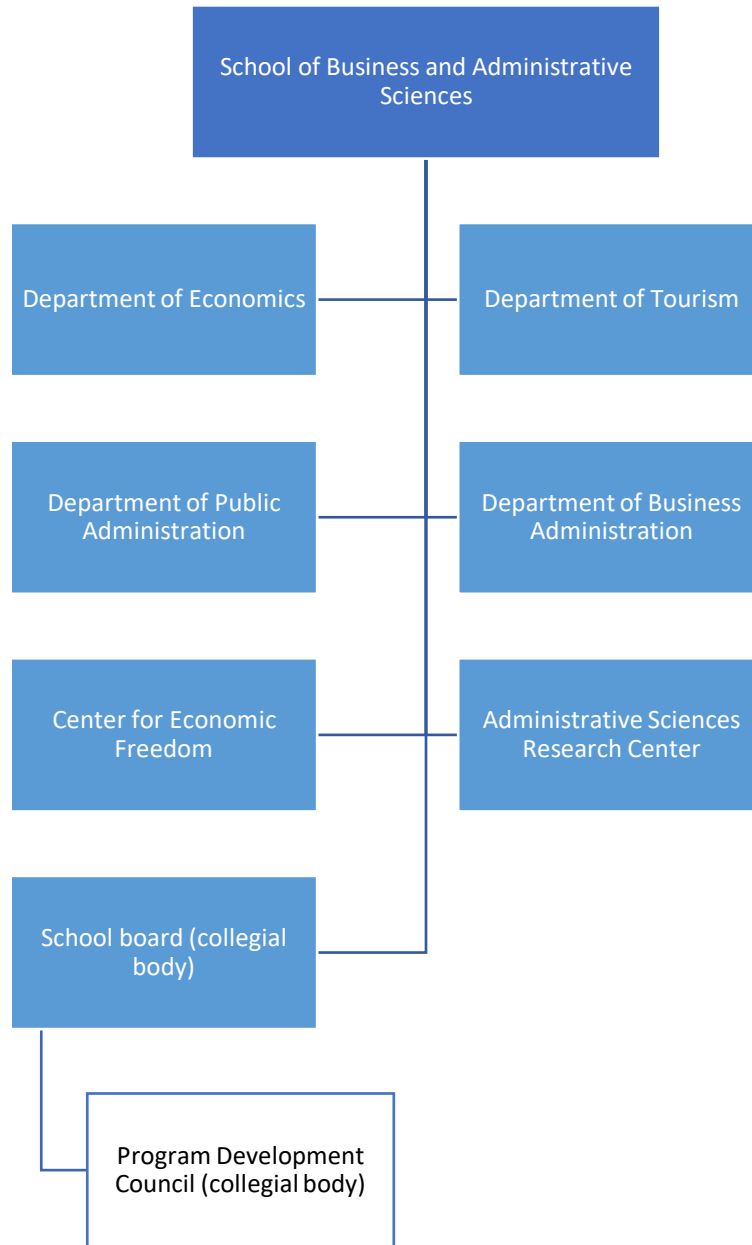




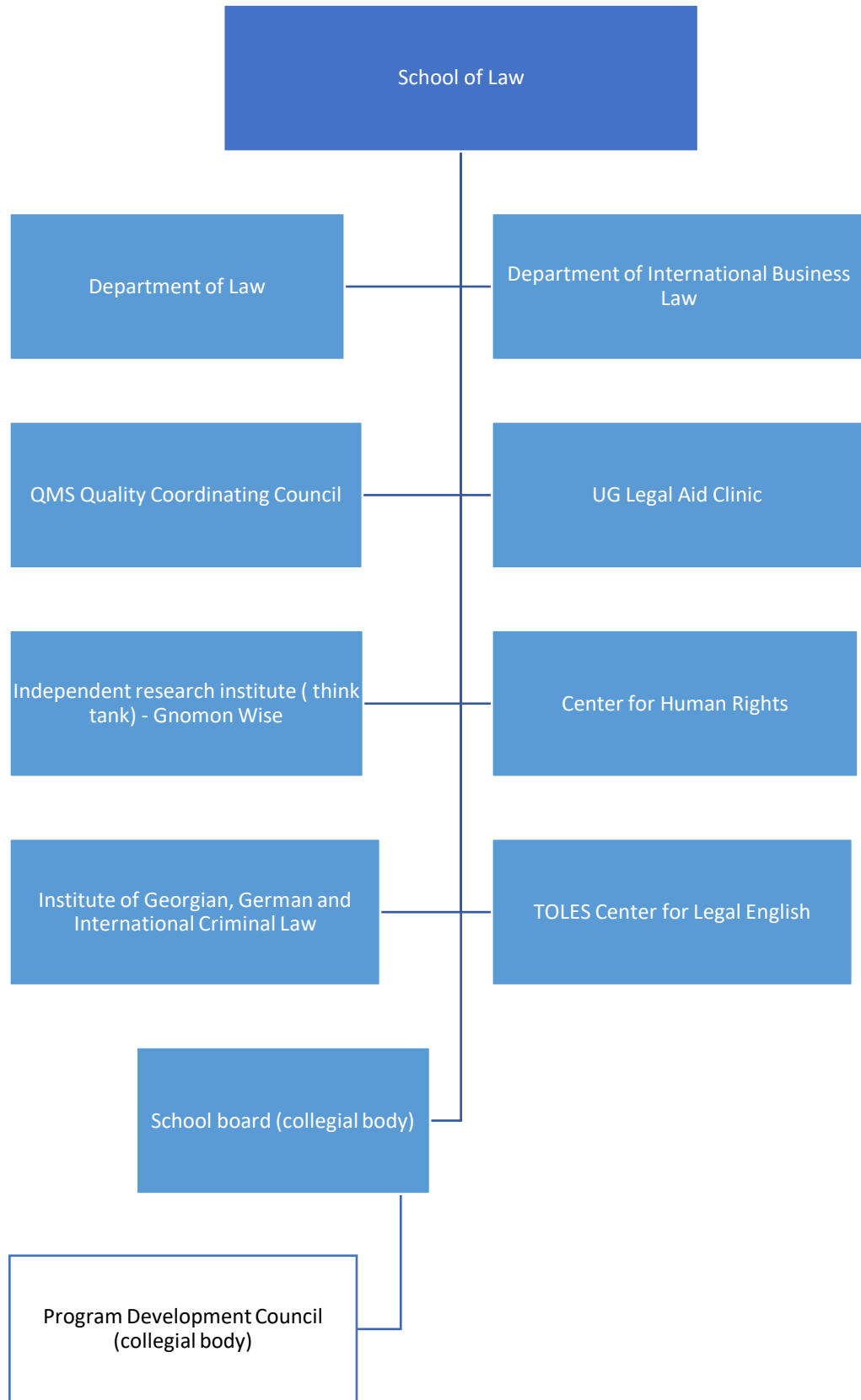
Structure of the University of Georgia



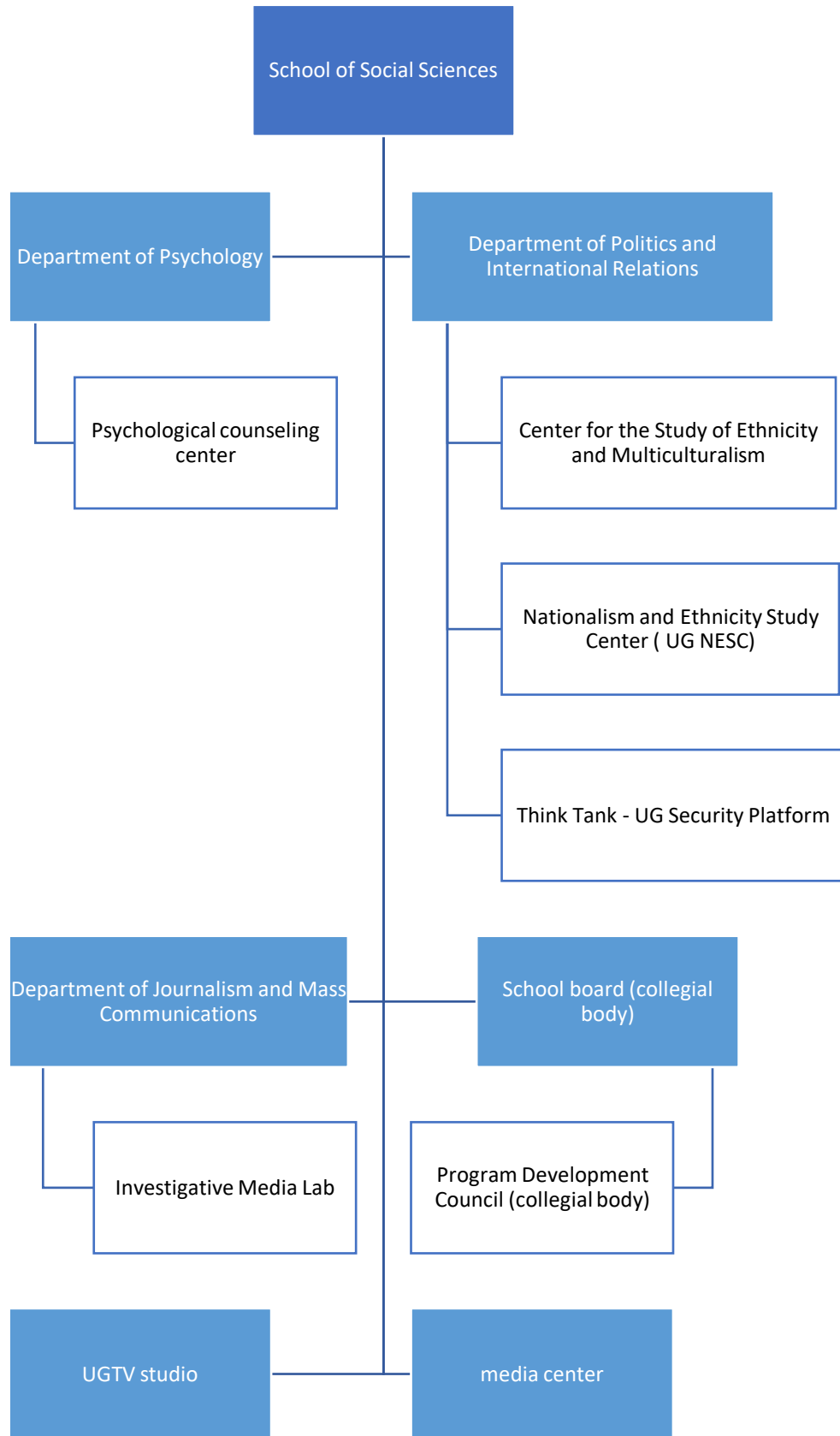
Structure of the University of Georgia



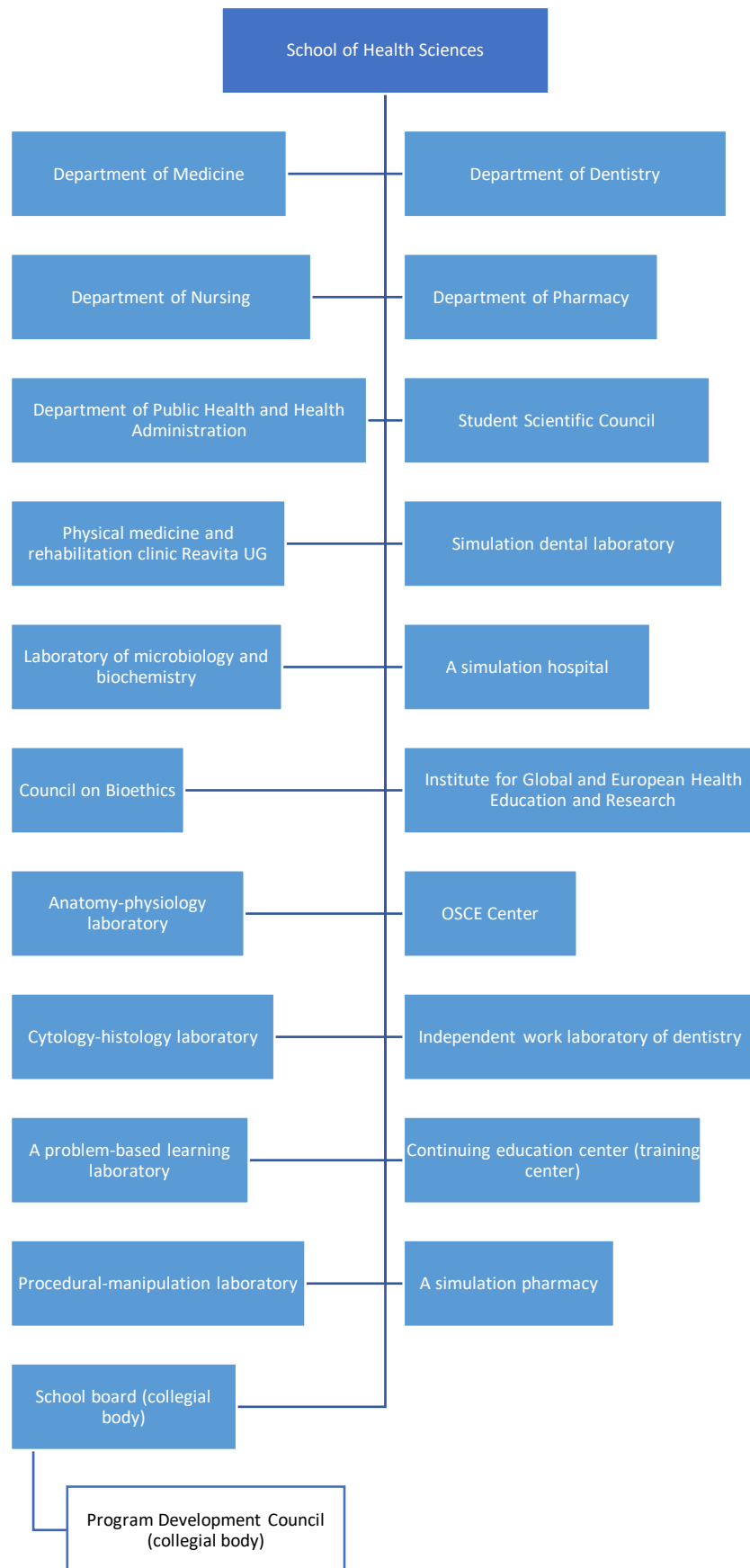
Structure of the University of Georgia



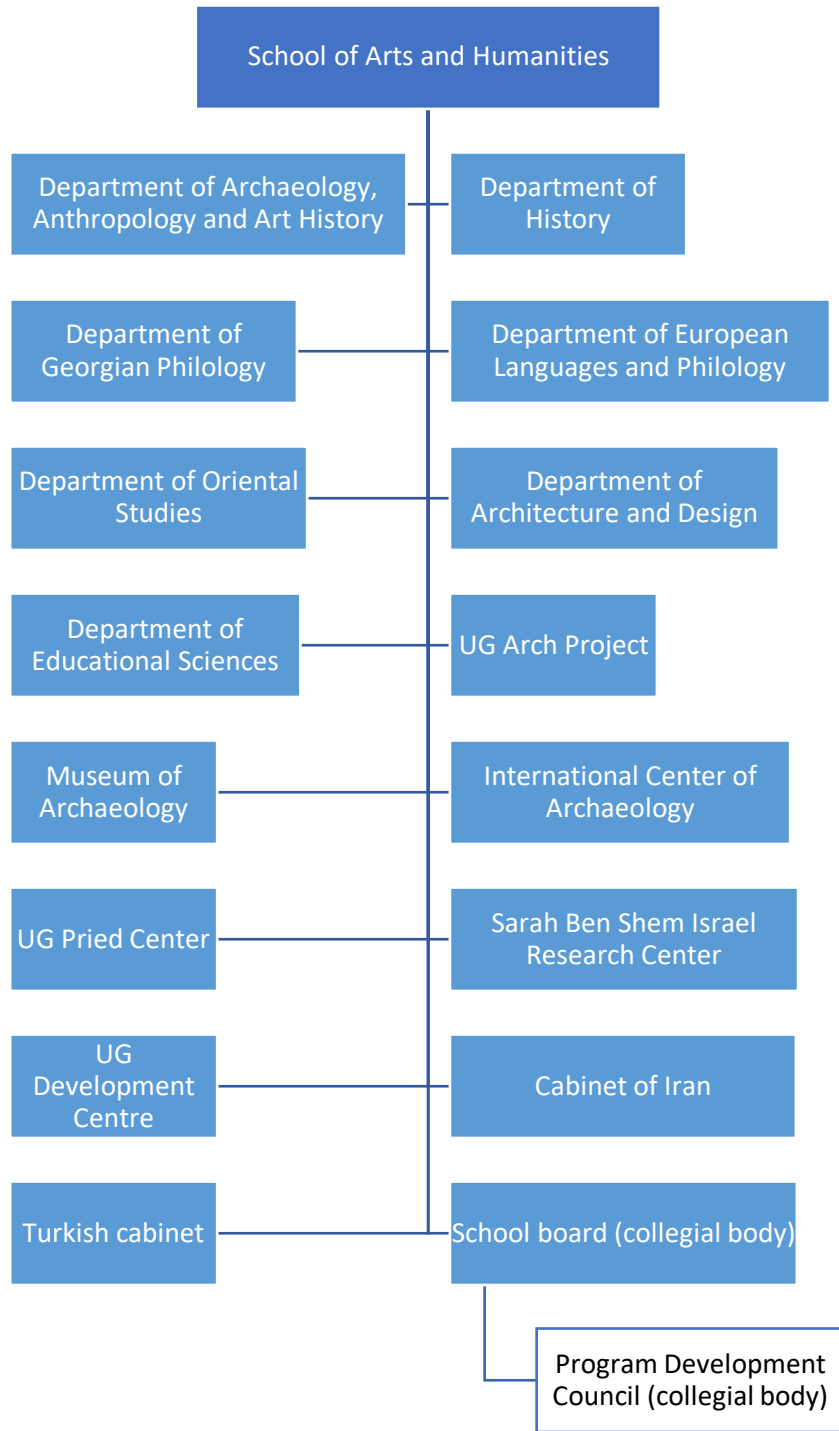
Structure of the University of Georgia



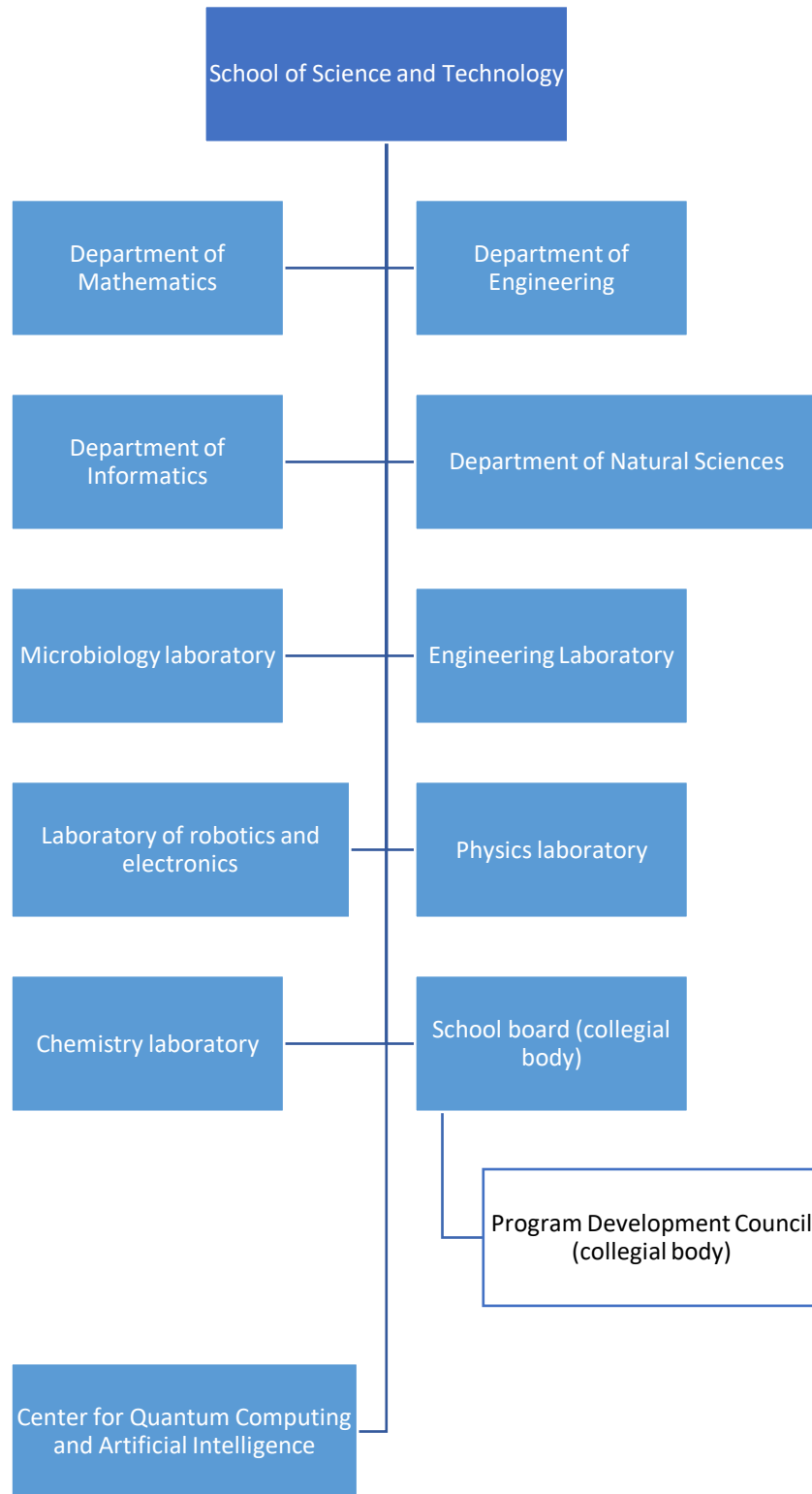
Structure of the University of Georgia



Structure of the University of Georgia



Structure of the University of Georgia



Structure of the University of Georgia

Approved by the minutes of the meeting of partners N-35/19

Change:

by the minutes of the meeting of partners N-05/21 ;

by the minutes of the meeting of partners N-03/22 ;

by the protocol of the Rector's Council N - 12/22 ;

by the protocol of the Rector's Council N - 01/23 ;

of partners N - 07/23 ;

by the protocol of the Rector's Council N-22/23;

by the protocol of the Rector's Council N-26/23;

by the protocol of the Rector's Council N - 31/23 ;